



THE INCLUSIVE
PLAY PROJECT



The Inclusive Play Project

What is the Inclusive Play Project?

Our group aims to build an inclusive playground in Kingston and raise awareness about the importance of inclusive play.
Because playgrounds should be for everyone!

Four ways you can education your school on inclusion:

- ✓ Inclusive Reading List
- ✓ Inclusive Resources
- ✓ Inclusive Activities
- ✓ Inclusive Watch List

What is Inclusion?

<https://inclusiveplayproject.com>

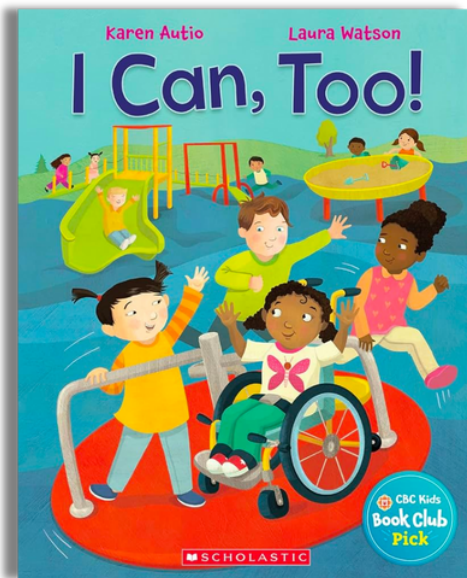
Inclusive Reading List



You Are Enough
By: Margaret O'Hair and Sofia Sanchez
Read Aloud: <https://youtu.be/eyuwM5GR6k?feature=shared>
Location to borrow: Kingston Frontenac Library (Calvin Park Branch, Isabel Turner Branch, Central Branch) Place to purchase: <https://a.co/d/eq3CHYB>



We Move Together
By: Kelly Fritsch and Anne McGuire
Read along: <https://youtu.be/B9vQYT4dCsc>
Location to borrow: KFL (Calvin Park Branch and Isabel Turner Branch) Place to purchase: <https://a.co/d/7hjIoPi>



I Can, Too!
By: Karen Autio
Location to borrow: KFL (Calvin Park Branch and Central Branch)
Place to purchase: <https://a.co/d/eq3CHYB>



Susan Laughs
By: Jeanne Willis
Read Aloud: <https://youtu.be/MRK2kS97F7k?feature=shared>
Location to borrow: Rideau Heights Branch
Places to purchase: <https://a.co/d/h8AXru5>



Let's Go Play
By: Shelby McCarthy
Read along: <https://youtu.be/Xg8fNBc4TC4?feature=shared>
Place to purchase: <https://goshout.love/hop/lets-go-play-a-childrens-book-about-adaptive-equipment-and-inclusion>



Fast Friends
By: Heather O'Conner
Read along: <https://youtu.be/ou7vMiFvHSY?feature=shared>
Location to borrow: KFL (Central Branch, Rideau Heights Branch, and Sydenham Branch) Place to purchase: <https://a.co/d/1XuROVc>



Louie's Together Playground

Read along:

<https://youtu.be/a0-3Ku2bDPw>

Place to purchase:

<https://a.co/d/in33i6x>

Gary's Gigantic Dream

Place to purchase:

<https://a.co/d/3Q6ciYo>

Lia's Kind Mind

<https://a.co/d/cniksJ1>

Goldie's Tasty Tacos

Place to purchase:

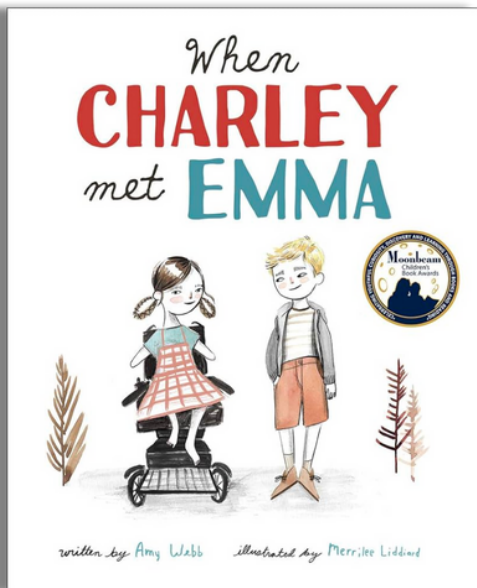
<https://a.co/d/3aQnVfP>



Place to purchase all:

<https://theablefables.com>

By: Nicole Julia



When Charley met Emma

By: Amy Webb

Places to purchase:

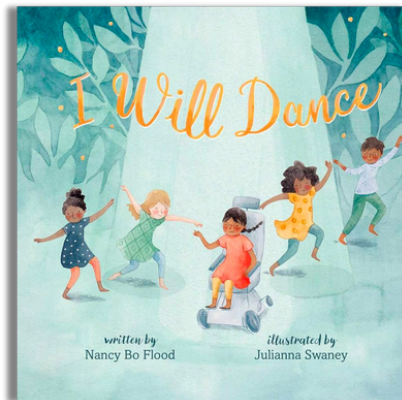
<https://a.co/d/4u3ckkp>

Location to borrow: KFL

(Rideau Heights Branch)

Read Aloud:

<https://youtu.be/aDPDtKENSns?feature=shared>



I Will Dance

By: Nancy Bo Flood

Read Aloud:

<https://youtu.be/m-Cok0CnY1g?feature=shared>

Location to borrow:

KFL (Central Branch)

Place to purchase:

<https://a.co/d/fJGXAA>



Just Ask Be

Different, Be Brave, Be You

By: Sonia Sotomayor

<https://youtu.be/q4sGcaA6bFk?feature=shared>

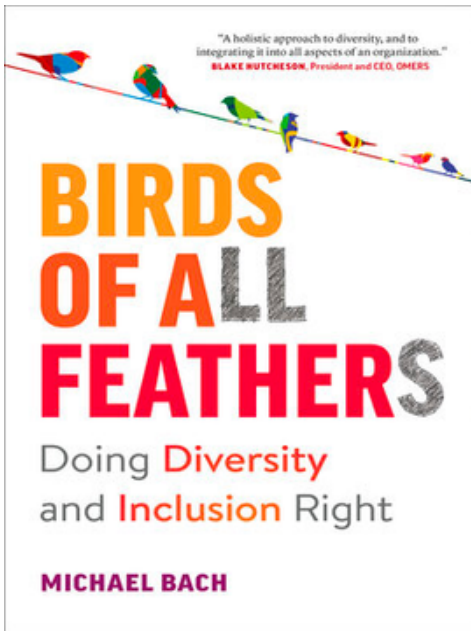
Location to borrow: KFL

(Calvin Park Branch, Isabel Turner Branch, Central Branch, and Pittsburgh Branch)

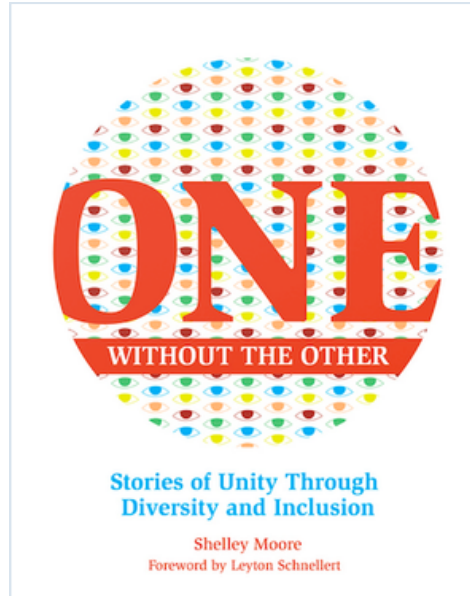
Places to purchase:

<https://a.co/d/cDrJWfr>

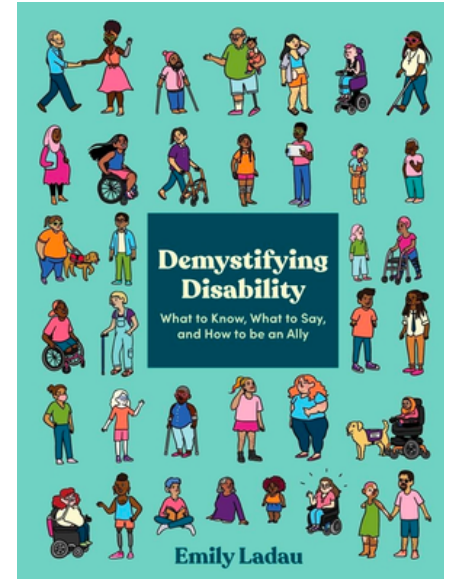
Inclusive Resources



Place to purchase:
<https://a.co/d/3QnwQ9S>
Location to borrow: KFL
(Calvin park Branch)



Place to purchase:
<https://a.co/d/1ToLZB0>
Location to borrow: KFL (Central Branch)



Place to purchase:
<https://a.co/d/9H1RVJH>



<https://reelabilities.org/>



<https://www.playlsi.com/en/playground-planning-tools/inclusive-play/>

Rick Hansen
Foundation



Resources Library: <https://www.rickhansen.com/schools-communities/resource-library>
-Access to lesson plans and classroom activities
Sign up for accessibility and inclusion training:
<https://www.rickhansen.com/become-accessible/accessibility-training-and-education>



ep-Magazine:
<https://reader.inclusivedocs.com/ep-magazine/titles/100501>

Inclusive Fundraiser Ideas



For May 2024 we are encouraging schools to participate in a board wide fundraiser! The class that raises the most for the inclusive playground will win a PIZZA PARTY!!!

Get Involved by:



Bake Sale



Bottle Drive



Basket Raffle



Sports Day



Car Wash



Dance



Movie Day



THE INCLUSIVE PLAY PROJECT

TSHIRT FUNDRAISER

YOUTH

ADULT

TODDLER

\$20 Each - Softstyle Cotton

EFT to info@jessicahellard.com and email with your size and colour info

Inclusive

Watch List



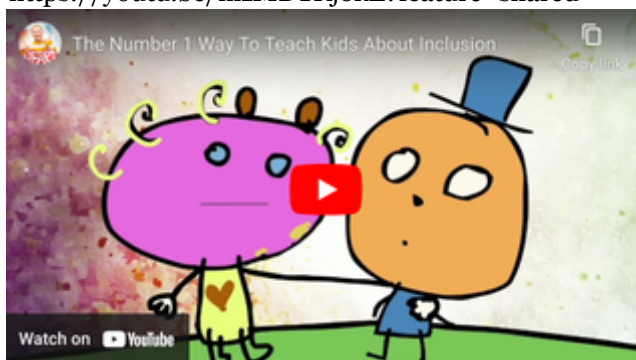
Why Inclusion Matters on the Playground
<https://youtu.be/CX5RuM3L1Ic?feature=shared>



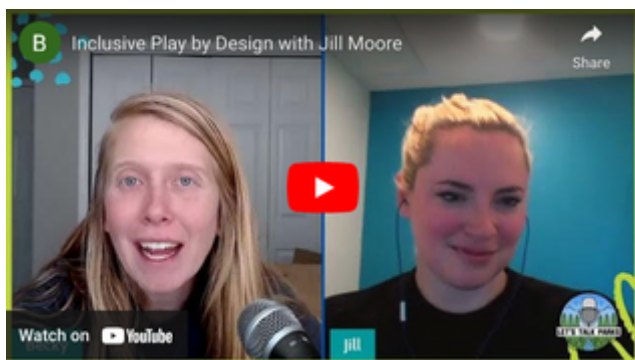
Making the World Better for Kids with Disabilities
<https://youtu.be/nlzMD1Kj6kE?feature=shared>



Inclusion and Education
<https://youtu.be/kEYjlqixq9c?feature=shared>



The Number 1 Way To Teach Kids About Inclusion
<https://youtu.be/2FCwiVrJdHE?feature=shared>



Inclusive Play by Design with Jill Moore
<https://youtu.be/1LXaKddy0E4?feature=shared>



What is Inclusion?
<https://youtu.be/Ea4TdXGp8f0?feature=shared>

Inclusive

Activities



Scavenger Hunt SK-Gr. 3

Instructions:

For younger grade students, it is suggested that the scavenger hunt be organized for the entire class versus breaking into smaller groups. During the scavenger hunt, the instructor can facilitate discussion about what the students discover focusing on the school's accessibility for individuals with various types of disabilities. The image included is a wheelchair but it can be changed based on the disability you want to focus on. If the location within the school is accessible to an individual with a wheelchair, have the students colour it in, if not, discuss why and brainstorm ways to improve the space.

Why is it important to think about accessibility for people of all ages and for people with and without disabilities? How do the activities and issues addressed in the scavenger hunt help people with disabilities participate in all the activities of school life?

Scavenger Hunt Gr.3-5

Instructions:

For older students, the activity begins with an introduction highlighting the school's inclusivity for everyone, including individuals with disabilities. The scavenger hunt encompasses non-disability-related access issues to broaden students' understanding of accessibility beyond disability-specific concerns. Students are encouraged to fill in the comments indicating what makes the space accessible/inclusive and if not identify barriers. The older students can be given extra requirements such as making measurements and comparing them to mobility devices or mapping out accessible routes for students. **Ask students to think about the goal of equal access as they review the selected school locations.**

Materials:

Measuring tape
Worksheet checklist
Camera to insert pictures of the location

Additional information can be found at:

<https://vermontsilc.org/education/include/unit-two/accessibility-scavenger-hunt/>

ACCESSIBILITY SCAVENGER HUNT

FIND ME



COLOUR:



IF THEY CAN ENTER THE:

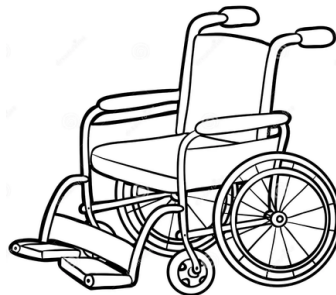
Insert Image

OFFICE



Insert Image

FRONT DOOR



Insert Image

CLASSROOM



Insert Image

BATHROOM



Insert Image

GYM



Insert Image

BACK DOOR



Insert Image

PLAYGROUND



School Accessibility Scavenger Hunt

Entrance and Path of Travel

Is there a wheelchair-accessible entrance? (This would be a flat, step-free entrance or a ramp with a flat landing in front of and next to the door, with a doorway that is at least 32 inches wide so that people in wheelchairs and scooters can enter.)

Yes **No** **Not Sure**

Comments: _____

Is the accessible entrance well-marked and easy to find? Do the entrance signs use large print, Braille and the wheelchair access sign?

Yes **No** **Not Sure**

Comments: _____

Are there accessible parking places reserved near the accessible entrance with a level path of travel to the door or ramped entrance?

Yes **No** **Not Sure**

Comments: _____

If ramped, does it have railings and raised bumps on the bottom of the ramp to let individuals who are blind know that a ramp is starting?

Yes **No** **Not Sure**

Comments: _____

Is the door easy to open without assistance?

Yes **No** **Not Sure**

Comments: _____

Can someone in a wheelchair get to all classrooms and shared areas of the school (e.g., classrooms, gym, bathrooms, cafeteria)?

Yes **No** **Not Sure**

Comments: _____

Do signs to offices, classrooms and other places in the building use pictures, large print and Braille?

Yes **No** **Not Sure**

Comments: _____

Bathrooms

Can someone with limited reach or limited hand mobility or strength open and close the door to the bathroom and to the stalls?

Yes **No** **Not Sure**

Comments: _____

Is there a Braille sign beside the door? Is it at a height that works for both shorter and taller people?

Yes **No** **Not Sure**

Comments: _____

Is there room for people in wheelchairs to get their chairs in the bathroom stall, close the door and position their chairs so they can transfer to the toilet?

Yes **No** **Not Sure**

Comments: _____

Is there a private space where someone who needs assistance in the bathroom can be assisted?

Yes **No** **Not Sure**

Comments: _____

Can a short person or someone with a mobility disability reach and use the sink faucets?

Yes **No** **Not Sure**

Comments: _____

Can individuals with limited reach or mobility disabilities use the soap and the paper dispensers?

Yes **No** **Not Sure**

Comments: _____

Playground

Is there a bell or whistle and a visual warning to let students with different disabilities know when recess begins and ends?

Yes **No** **Not Sure**

Comments: _____

Is the ground smooth and firm enough so that someone in a wheelchair or with limited balance or vision can use the play areas?

Yes **No** **Not Sure**

Comments: _____

Are raised dots on the ground in front of slides, ramps, or other raised walking or play areas so that someone who is blind or has limited vision knows they are there?

Yes **No** **Not Sure**

Comments: _____

Can someone with limited mobility use the play equipment?

Yes **No** **Not Sure**

Comments: _____

Can someone with limited or no vision find his or her way to different play areas?

Yes **No** **Not Sure**

Comments: _____

Is equipment marked by Braille or and other raised elements or symbols?

Yes **No** **Not Sure**

Comments: _____

Is there a buddy system or some other way to make sure all children are welcomed and included?

Yes **No** **Not Sure**

Comments: _____



!!! NOT ALL !!!
DISABILITIES
ARE
VISIBLE





What does Inclusion mean to you?

Name:

Who is someone you know that would benefit from an inclusive playground? Why?

Draw a picture of you and them playing together at the new inclusive playground.

